

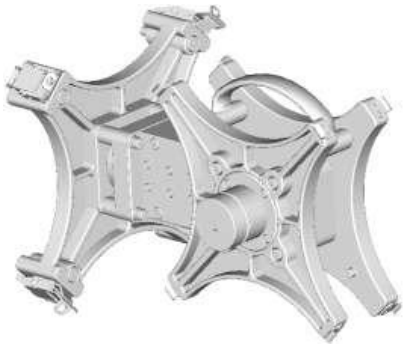
Schematic

Hybrid Coupler

Hybrid Coupler is 3-port microwave waveguide system that splits the input power into two parts, consequently, allows the simultaneous operation of two GX-800 outdoor radio units (ODUs). Its application, together with high performance antennas, leads to use of two independent transmission channels on a single antenna at the same time.

Main components of coupler

- Waveguide cavity
- Waveguide absorbing load
- Flange



7G-38G Hybrid Coupler

Electrical Specifications

6dB Coupler

Freq.	Freq.range	Model	Coupling Variation	Loss Variation	Coupling / Split	Loss	VSWR	Isolation	Waveguide type	
Band	(GHz)		Max.dB	Max.dB	Max.dB	Max.dB	Max.	Min dB	Ant Side	ODU Side
7G & 8G	7.125~8.5	GX800-7806-COUPLER	1.0	0.5	7	1.9	1.3	20	1.025"dia	1.025"dia
10G	10.0~10.7	GX800-1006-COUPLER							153IEC-R100	153IEC-R100
11G	10.7~11.7	GX800-1106-COUPLER							153IEC-R120	153IEC-R120
13G	12.7~13.3	GX800-1306-COUPLER							153IEC-R120	153IEC-R120
15G	14.4~15.4	GX800-1506-COUPLER							153IEC-R140	153IEC-R140
18G	17.7~19.7	GX800-1806-COUPLER							153IEC-R220	153IEC-R220
23G	21.2~23.6	GX800-2306-COUPLER			153IEC-R220	153IEC-R220				
26G	24.2~26.5	GX800-2606-COUPLER			153IEC-R220	153IEC-R220				
28G	27.5~29.5	GX800-2806-COUPLER			8	2.1	1.4		153IEC-R320	153IEC-R320
32G	31.8~33.4	GX800-3206-COUPLER			153IEC-R320	153IEC-R320				
38G	37.0~40.0	GX800-3806-COUPLER	0.219"dia	0.219"dia						

3dB Coupler

Freq.	Freq.range	Model	Coupling Variation	Coupling / Split	Loss	VSWR	Isolation	Waveguide type	
Band	(GHz)		Max.dB	Max.dB	Max.dB	Max.	Min dB	Ant Side	ODU Side
7G & 8G	7.125~8.5	GX800-7806-COUPLER	1.0	3.8	3.8	1.3	20	1.025"dia	1.025"dia
10G	10.0~10.7	GX800-1006-COUPLER						153IEC-R100	153IEC-R100
11G	10.7~11.7	GX800-1106-COUPLER						153IEC-R120	153IEC-R120
13G	12.7~13.3	GX800-1306-COUPLER						153IEC-R120	153IEC-R120
15G	14.4~15.4	GX800-1506-COUPLER						153IEC-R140	153IEC-R140
18G	17.7~19.7	GX800-1806-COUPLER						153IEC-R220	153IEC-R220
23G	21.2~23.6	GX800-2306-COUPLER						153IEC-R220	153IEC-R220
26G	24.2~26.5	GX800-2606-COUPLER						153IEC-R220	153IEC-R220
28G	27.5~29.5	GX800-2806-COUPLER						153IEC-R320	153IEC-R320
32G	31.8~33.4	GX800-3206-COUPLER						153IEC-R320	153IEC-R320
38G	37.0~40.0	GX800-3806-COUPLER	4.1	4.1	1.4		0.219"dia	0.219"dia	

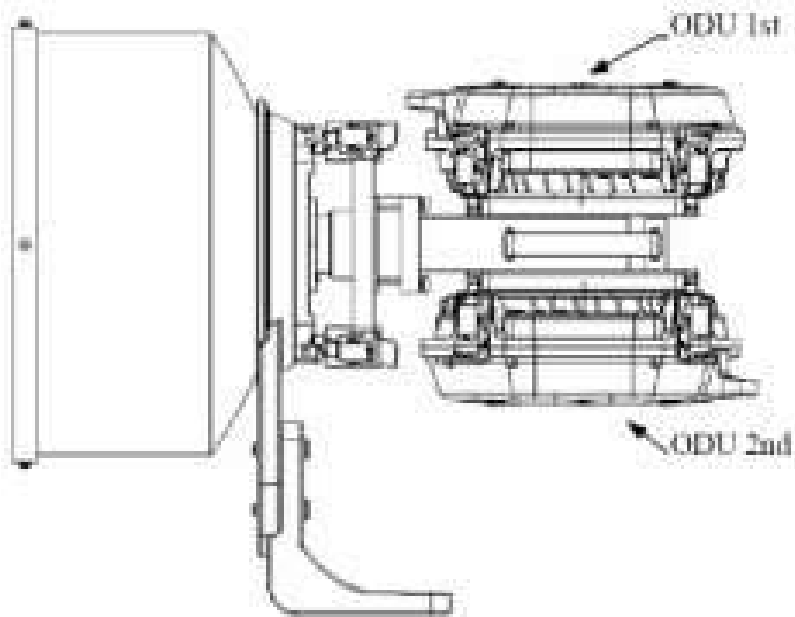
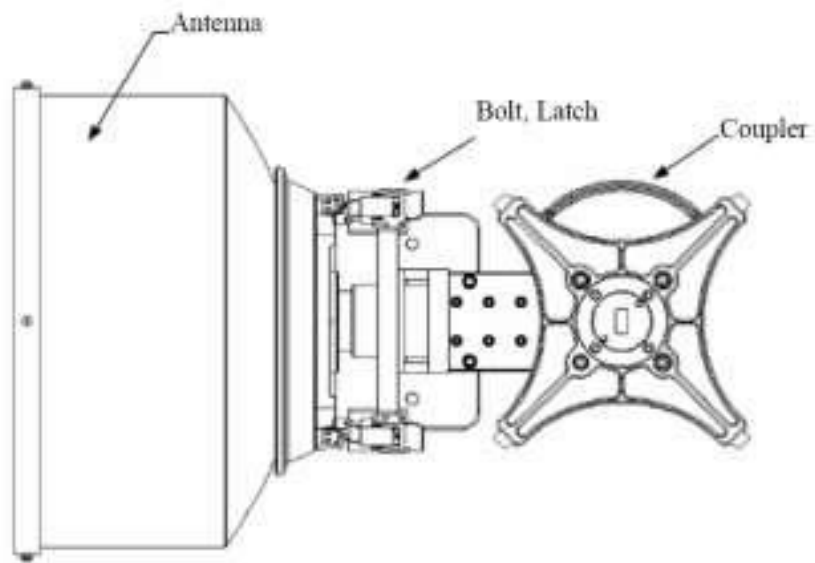
Mechanical and Environment

Temperature Range	Working Temperature	-45 to +60
	Maximum Temperature	-55 to +60
Wind Velocity	Working Wind Velocity	30 m/s
	Extreme Wind Velocity	55 m/s
Weight	7-38G	<6 Kg
	6G	<3 Kg
Operational Humidity		< 95
Power tolerance		Vertical and Horizontal Polarization
Installation		7~38G:button and screw assemble at the same time
Surface flame plating		RAL9016
Environmental protection demands		RoHS

Package Contents

3/6 dB Coupler Packing List (7G-38G)

- One Coupler (GX800-XXXX-COUPLER)
- Inner Hexagon Wrench - 2.5#
- Vaseline
- Finger Sheath
- Switch
- Installation Guide
- Specifications
- Declaration of Hazardous / Toxic Substances / Elements



7G-38GHz Coupler Installation Guide