

## ORiNOCO<sup>®</sup> AP-9100R, 这是一款专为户外使用而设计, 具有双无线802.11ac接入点

ORiNOCO<sup>®</sup> AP-9100R利用Proxim在Wi-Fi和室外系统方面的专业知识, 为户外使用提供双无线802.11ac接入点。

ORiNOCO<sup>®</sup> AP-9100R具有MIMO 2x2:2性能, 总数据速率高达1166 Mbps, 超高的灵活性。此外, 得益于Proxim Tsunami<sup>®</sup>产品的强大IP67防风雨设计, 该产品具有以下独特的功能, 例如双千兆以太网端口, 可控PoE输入和输出。802.11ac更高的数据处理量和更长的频宽范围优势可以帮助各种规模的组织包括运营商、中小型企业、医疗保健、政府和公共安全部门在内, 实现比现有有线和无线LAN更高的性能

### 世界级性能

ORiNOCO<sup>®</sup> AP-9100R产品使各种规模的企业能够在室外扩展LAN, 同时提供与现有以太网相同的性能。

- 高数据处理量, 双频速率可达866 + 300 Mbps
- 高功率无线传输, 5 GHz时可提供高达28 dBm (2 RF) 的功率
- 现有标准WLAN处理量的两倍
- 高可靠性的四重播放应用
- IPv4和IPv6双协议栈, 在不易察觉的情况下演变成未来的网络。

### 高安全性

ORiNOCO<sup>®</sup> AP-9100R提供企业级安全性, 确保对敏感信息的全面保护。

- 基于802.11i/WPA2<sup>™</sup>的安全性, AES 128加密和802.1x远程认证拨入用户服务的身份验证
- 设备周围的恶意扫描列表
- 安全管理 (SSL/TLS1.2, SSH和SNMPv3), 可防止不必要的配置更改
- IP67等级的金属外壳, 电涌保护以太网和天线端口

### 高级功能

ORiNOCO<sup>®</sup> AP-9100R具有多种功能。

- 双千兆以太网端口, PoE输出为其他设备例如监控摄像机或附加无线电供电
- 具有VLAN分配的多SSID, 以及以太网端口接入和中继模式
- 802.11e/WMM<sup>®</sup>服务质量
- 公共HotSpot集成了主页重定向和防火墙防御。
- HotSpot 2.0可自动搜索, 并无缝地向公共Wi-Fi网络进行身份验证

### 超高灵活性和集中管理的便利性

ProximVision<sup>®</sup>高级版支持ORiNOCO<sup>®</sup>设备, 为网络架构提供超高灵活性和对设备的调控性

- 快速网络部署: 自动化配置流程, 能够更快、更有效地部署Proxim无线网络
- 高级配置功能: 为网络管理者提供了基于软件的工具进行详尽设备配置的选择权
- 操作更简单和升级更方便: 与同价格具有竞争力产品方案相比支持更多的设备, 并提供最简单的配置和升级途径

### 关于Proxim Wireless

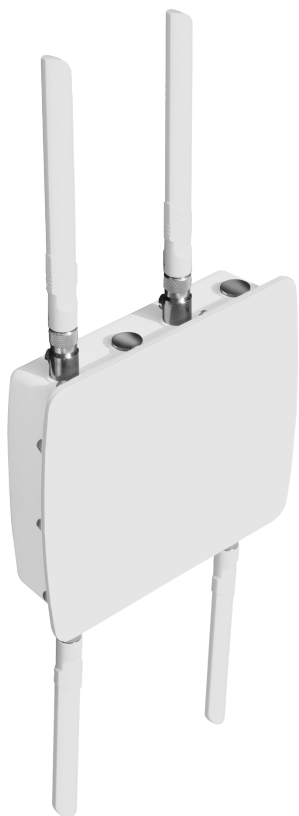
Proxim Wireless是全球先进的Wi-Fi、点对点、点对多点户外无线系统的先驱和领头羊, 该系统用于建立关重要任务和高度可用性通信。

Proxim公司拥有超过30年的无线电方面的经验, 以其无与伦比的可靠性, 卓越的性能和创新动力而闻名。

### 独立系统和控制器就绪

ORiNOCO<sup>®</sup> AP-9100R集两种架构的优点于一体:

- 独立式操作
- 基于控制器的ProximVision<sup>®</sup>高级版



## 规格

PRODUCT MODELS										
AP-9100R	ORINOCO® AP-9100R, MIMO 2x2, 802.11 ac + b/g/n dual radio outdoor Access Point									
INTERFACES										
WIRED ETHERNET WIRELESS PROTOCOL	Two auto MDI-X RJ45 10/100/1000Mbps Ethernet - Port #1 with PoE in & Data - Port #2 with PoE out & Data Radio #1: 802.11a/n/ac Radio #2: 802.11b/g/n									
RADIO & TX SPECS										
	Radio #1					Radio #2				
FREQUENCY	5.150 – 5.925 GHz (Subject to Country Regulations)					2.400 – 2.484 (Subject to Country Regulations)				
	802.11ac		802.11n		802.11a	802.11n		802.11g	802.11b	
MIMO	2x2:2		2x2:2		2x2:2	2x2:2		N/A	N/A	
MODULATION	OFDM BPSK-QAM256		OFDM BPSK-QAM64		OFDM BPSK-QAM64	OFDM BPSK - QAM64		OFDM BPSK-QAM64	DSSS DBPSK-CCK	
DATA RATE	Upto 866 Mbps		Upto 300 Mbps		Upto 54Mbps	Upto 300Mbps		Upto 54Mbps	Upto 11Mbps	
	80 MHz	40 MHz	20 MHz	40 MHz	20 MHz	20 MHz	40 MHz	20 MHz	20 MHz	20 MHz
TX POWER	MCS0: 28	MCS0: 28	MCS0: 29	MCS0: 28	MCS0: 29	6 Mbps: 29	MCS0/8: 26	MCS0/8: 26	6 Mbps: 26	1 Mbps: 26
	MCS9: 21	MCS9: 22	MCS8: 25	MCS7: 22	MCS7: 25	54 Mbps: 27	MCS7/15: 20	MCS7/15: 21	54 Mbps: 22	11 Mbps: 26
RX SENSITIVITY (Per=10 <sup>-6</sup> )	MCS0: -89	MCS0: -93	MCS0: -94	MCS0: -93	MCS0: -94	6 Mbps: -94	MCS0/8: -88/90	MCS0/8: -92/91	6 Mbps: -93	1 Mbps: -93
	MCS9: -68	MCS9: -71	MCS8: -74	MCS7: -75	MCS7: -77	54 Mbps: -80	MCS7/15: -72/69	MCS7/15: -74/72	54 Mbps: -81	11 Mbps: -89
OTHER	Auto Channel Selection (ACS) Dynamic Frequency Selection (DFS) based on radar signature					Auto Channel Selection (ACS)				
ANTENNA										
	Radio #1					Radio #2				
	Two N-type Connectors with built-in Surge Protection Two 7 dBi, omni-directional antenna provided					Two N-type Connectors with built-in Surge Protection Two 5 dBi, omni-directional antenna provided				
SECURITY										
AUTHENTICATION	Enterprise/802.1x, Personal/ PSK (Pre Shared Key) or Open plus Internal MAC Address Control List									
802.1X SUPPORT	PEAP, LEAP, EAP-TLS, EAP-TTLS, EAP-SIM, EAP-AKA, EAP-FAST									
ENCRYPTION	802.11i/WPA2 and WPA Wireless Security with AES-128, TKIP or WEP									
WIRELESS										
AP-AP COMMUNICATION	WDS with STP loop avoidance									
RF ENVIRONMENT	Spectrum analyzer									
OTHER	802.11h Spectrum and Transmit Power Management Extensions									
QoS										
PACKET CLASSIFICATION	802.11e/WMM Enhanced Distributed Channel Access, 4 priority queues 802.1p priority, IPTOS									
HOTSPOT										
	Home Page Redirect with configurable URL and Domain based Walled Garden with wild card support Hotspot 2.0									
THROUGHPUT										
	Radio #1					Radio #2				
	Up to 450 Mbps					Up to 150 Mbps				
MANAGEMENT										
REMOTE SNMP OTHER	Telnet and SSH, Web GUI and SSL/TLS1.2, TFTP, SNMPv3 SNMP v1-v2c-v3, RFC-1213, RFC-1215, RFC-2790, RFC-2571, RFC-3412, RFC-3414, Private MIB 802.11d/802.11h Spectrum and Regulatory Features									

POWER		INPUT		OUTPUT	
		36 to 57 VDC via Ethernet port1 (Power over Ethernet)		48 to 57 VDC - 25 Watt on Ethernet port2 (PoE – software controlled)	
		12 VDC via Access port		12 VDC on Access port	
		Power should not be provided simultaneously on both ports.			
NETWORK					
IP STACK	IPv4 and IPv6 simultaneously				
VLAN	802.1Q: Management VLAN. Transparent, Access and Trunk mode. Radius based VLAN assignment				
POWER CONSUMPTION					
	16.5 Watt typical, 22.5 Watt maximum				
ENVIRONMENTAL SPECS	OPERATING TEMPERATURE	STORAGE TEMPERATURE	HUMIDITY - IP RATING	WIND LOADING	
	-40° to 60°C (-40° to 140° Fahrenheit)	-50° to 70°C (-58° to 158° Fahrenheit)	100% relative humidity - IP67	180 km/h (112.5 mph)	
PHYSICAL SPECS	DIMENSIONS PACKAGED	DIMENSIONS UNPACKAGED	WEIGHT (PACKAGED)	WEIGHT (UNPACKAGED)	
XP-10100-SUA	14.56 x 13.0 x 7.87 in (370 x 331 x 200 mm)	9.84 x 8.66 x 2.83 in (250 x 220 x 72 mm)	10.91 lbs (4.95 kg)	5.07 lbs (2.3 kg)	
SAFETY STANDARDS					
	UL 60950, CAN/CSA-C22.2 No. 60950, IEC 60950, EN 60950 (part -1 and -22)				
CERTIFICATIONS					
	USA: FCC 90Y + 15C + 15E (UNII 15.247) Canada: IC RSS 102 + RSS 111 + RSS 247 Europe: RED EN 301 489-1 + EN 301-489-17 + EN 300 328 + EN 301 893 + EN 302 502 Railway: EN 50155 + EN 50121 + EN 61373				
PACKAGE CONTENTS					
	<ul style="list-style-type: none"> <li>• One ORiNOCO® AP-9100R with four N-type surge protected connectors</li> <li>• Two 2.4 GHz, 5 dBi omni antennas</li> <li>• Two 5 GHz, 7 dBi omni antennas</li> <li>• One Connector weatherproofing kit (Includes all recommended weatherproofing material)</li> <li>• One power injector and country specific power cord</li> <li>• One Wall / Pole mounting kit</li> <li>• One Grounding kit</li> <li>• One Antenna alignment (RJ11) dongle</li> <li>• One Quick Installation Guide</li> </ul>				
MTBF & WARRANTY					
	>250 000 hours, 2-year warranty, ServPak Extended Support available.				