



# Lynx<sup>®</sup>.GX 16T

## Wireless Point-to-Point Radio

### Industry's first unlicensed 16xT1 split-design radio

Proxim's Lynx.GX 16T is a high-capacity full-duplex point-to-point microwave radio solution that provides unprecedented system gain and installation flexibility for cellular backhaul, enterprise voice and network redundancy applications. Offering 16xT1 capacity and a unique split-box design, Lynx.GX 16T enables mobile operators to easily stay ahead of rapid subscriber growth while significantly saving on operating costs.

### Applications

- Cellular voice backhaul
- Backbone connection

### Features and Benefits

- Exceptional system gain and RF performance provide long distance, highly robust links
- True Carrier-Class reliability
  - Over 99.999% reliable transmission
  - NEBS Level 3 Compliant
- Total installation flexibility
  - Mount the RF Unit outdoors to maximize distance or minimize costs by reducing tower rental fees, and by using smaller less expensive antennas and cable
  - Mount the radio completely indoors to allow for easy equipment access
- Spectrum Analyzer facilitates RF planning
- SNMP Network Management System (NMS) and web-based GUI simplifies remote management
- Wayside Ethernet Channel enables far-end management of both Proxim and Non-Proxim equipment
- Eliminates expensive recurring leased line costs
- License-exempt frequencies accelerate time-to-revenue by avoiding lengthy and costly licensing procedures
- Proprietary encryption methods ensure secure data transmission

### Prepare for future growth

Doubling the capacity of current license-exempt multi-DS1 products, Lynx.GX 16T offers mobile operators the capacity they need to support the ever-increasing density of users and higher-bandwidth cellular applications, such as photograph sharing, short text messaging, Internet access and multimedia services. Superior system gain ensures consistent, carrier-class transmission of growing voice traffic.

### Deploy in days

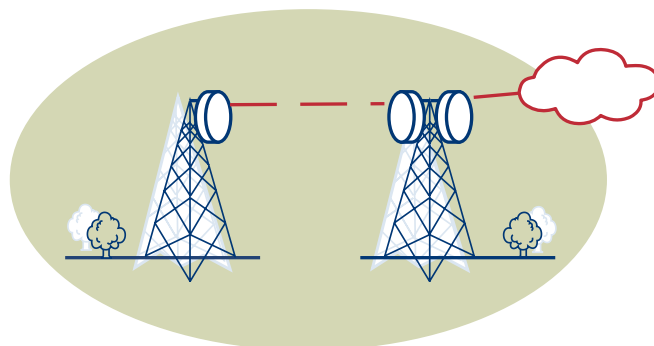
Because Lynx.GX 16T operates in the license-exempt 5.8 GHz ISM frequency band, it can be deployed in days - eliminating the long lead times associated with leasing lines or trenching new fiber optic cable. Rapid deployment means business continuity is maintained, and mobile operators don't have to worry about downtime. Since it's wireless, the Lynx.GX 16T can be easily redeployed as needed.

### Choose your ideal installation

Lynx.GX 16T is uniquely designed as a two-piece split-box assembly, consisting of an Indoor Unit (IDU) and an RF Unit. Based on your specific maintenance, system performance and budget requirements, you can choose to install the RF Unit indoors for maximum convenience or outdoors for stronger signal strength. The platform simplifies future upgrades by requiring only Indoor Unit (IDU) replacement.

### Easily manage and trouble-shoot your network

The Lynx.GX 16T offers sophisticated, standards-based management tools for easy integration into existing network management platforms. It also delivers advanced diagnostic tools, such as a built-in spectrum analyzer and an alarm log, to help identify and isolate issues before they occur.



Voice and Data Backhaul

