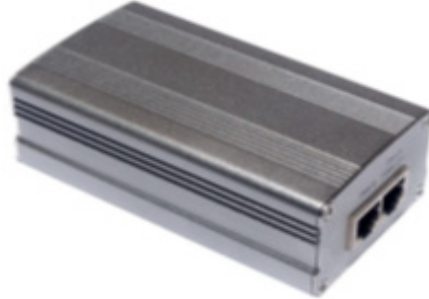


# ETH-POEINJ60-1G

## 60 Watt Gigabit PoE Injector



Proxim's 60 Watt Gigabit PoE Injector provides power over Ethernet to Tsunami QB / MP / XP and ORiNOCO AP / QB, even if PoE out is required on the second Ethernet port of the device.

### Features and Specification

- Shielded Gigabit Ethernet Interface
- 110–240 VAC input power-> 100-240VAC
- IEEE 802.3at protocol – non standard, non compliant
- Protection against short circuit, over current and over voltage
- Safety certified against EN 60950 standard
- Level VI power efficiency
- MTBF 26 280 hours

### RJ-45 Pin-Out

PIN	DATA	POWER
1	Data	Positive Out
2	Data	Positive Out
3	Data	Negative Out
4	Data	Positive Out
5	Data	Positive Out
6	Data	Negative Out
7	Data	Negative Out
8	Data	Negative Out

### Package Contents

- One Gigabit PoE Injector (ETH-PEOINJ60-1G)

### Electrical Rating

Output Voltage	56 Volt DC
Output Current	1.1 Amps
Output Power	60 Watt

### Environment & Mechanical

Temperature Range	Operating: 0 to +40 °C Storage: -40 to +70 °C
Relative Humidity (non-condensing)	5 to 90 %
Vibration	Operating: IEC 721-3-3 3M3 5~9Hz, A=1.5mm 9~200Hz, Acceleration=5m/s <sup>2</sup> Transportation: IEC 721-3-2 2M2 5~9Hz, A=3.5mm 9~200Hz, Acceleration=5m/s <sup>2</sup> 200~500HZ, Acceleration=15m/s <sup>2</sup> Axes,10 cycles per axis
Dimensions	121mm (L) x 64mm (W) x 38mm (H)
Weight	320 g

### Ordering Information

CPN	Description
949-00115	Gigabit , 60W, PoE injector with RJ45