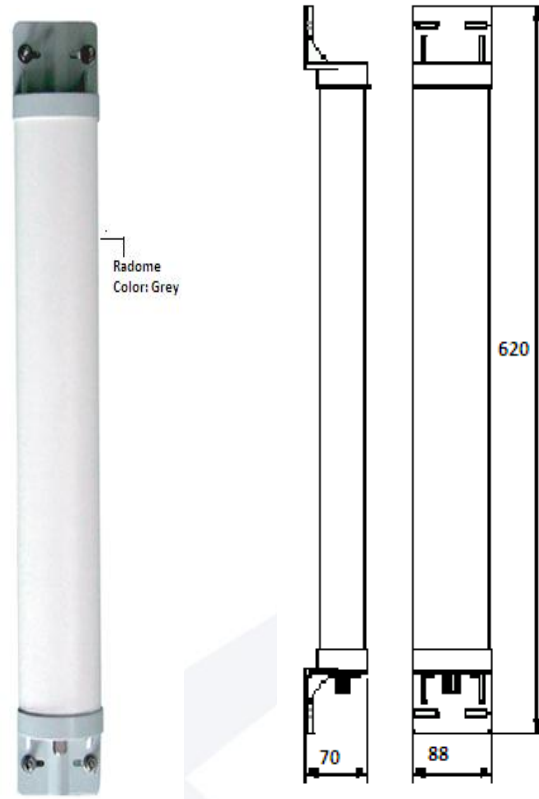


ELECTRICAL SPECIFICATIONS

Frequency range	4945 MHz - 5875 MHz
VSWR	2.0 : 1 Max
Gain	16.5 dBi
Polarization	Linear, vertical
HPBW/horizontal	60 degrees
HPBW/vertical	6 degrees
Electrical downtilt	0 degrees
Power Handling	5 W (cw)
Impedance	50 ohms
Connector Type	N-type Jack

MECHANICAL & ENVIRONMENTAL SPECIFICATIONS

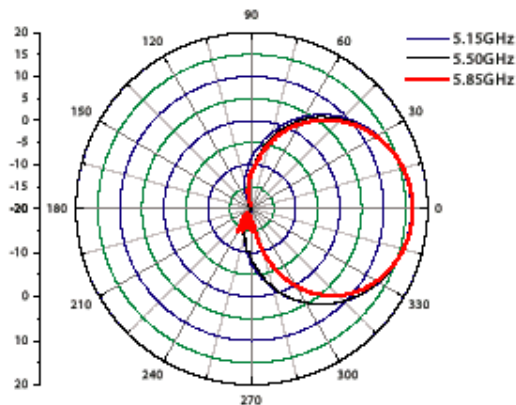
Dimensions	620 x 88 x 70 mm
Weight	565 gw
Temperature range	-40 C to +80 C
Humidity	95% @ +25 C
Survival wind speed	180 km/hr
Lightning protection	DC ground
Radome color	Gray
Radome material	ABS



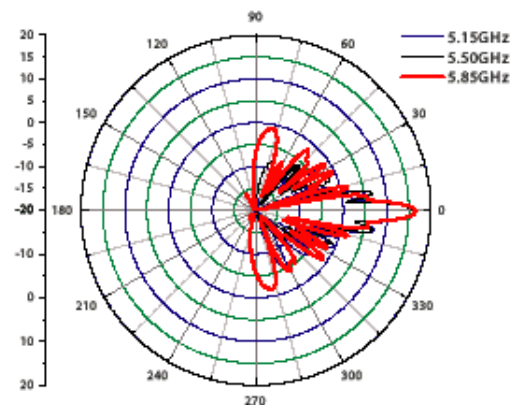
Layout

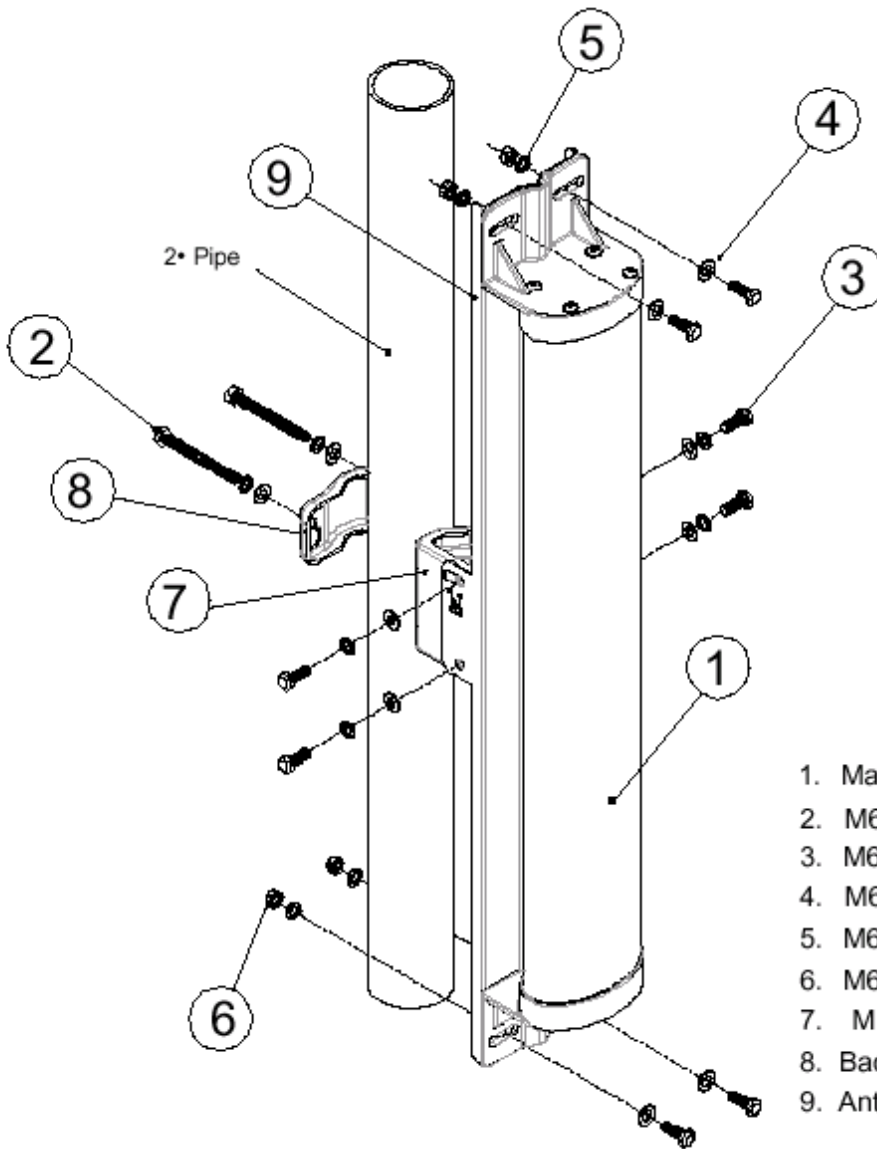
MECHANICAL LAYOUT

H-Plane Co-polarization pattern



V-Plane Co-polarization pattern





- | | |
|----------------------------|------|
| 1. Main body | 1pcs |
| 2. M6_60mm Bolt | 2pcs |
| 3. M6_16mm Bolt | 8pcs |
| 4. M6_Washer | 8pcs |
| 5. M6_S/Washer | 8pcs |
| 6. M6_Nut | 4pcs |
| 7. M Type Bracket • | 1pcs |
| 8. Back Support Plate • | 1pcs |
| 9. Antenna Support Plate • | 1pcs |