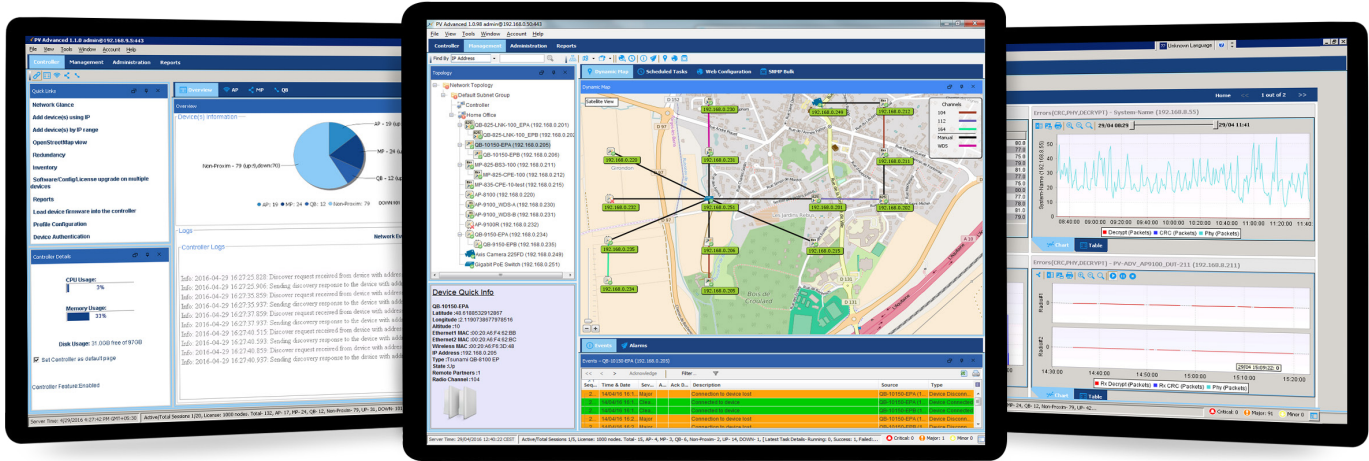


# ProximVision® Advanced

## Control your Wireless Network through the Cloud



## ProximVision® Advanced merges a Cloud Based Carrier Management System and WLAN Controller features into a single cutting-edge software platform

ProximVision® Advanced takes the next step in network management and control providing seamless command over very large Heterogeneous Network (Het Net) deployments. This groundbreaking solution provides detailed fault reporting, configuration, administration, and provisioning support for all Proxim radio products including WiFi access points, backhaul links, and point to multipoint solutions.

With a suite of powerful tools, PV Advanced unifies management of the entire Proxim infrastructure, with just a few clicks. From monitoring network performance to automatic remote device configuration and management PV Advanced simplifies network deployment and provides total control

- Enable Load Balancing and Band steering for better AP efficiency
- Review Client device information over the last 30 days, position it on the map and track it on the move

### Be the First to Know

Identify faults and troubleshoot remotely

- Visualize network status on the static or dynamic maps
- Set advanced threshold rules alarms and push-notifications on events that require immediate notification
- Quickly identify and isolate faults via the Alert filtering tool
- Access and manage your network from any location via Web based access

## Designed to Support Very Large Heterogeneous Networks

- Controls up to 10 000 devices via 50 concurrent network admin sessions
- Fully supports Proxim ORiNOCO® and Tsunami® product lines, while providing basic information for SNMP ready 3<sup>rd</sup> party elements (such as Router, Switches or video cameras..)
- Removes the management system as a single point of failure by supporting redundant servers and databases.
- Includes a North Bound Interface based on Restful API allowing customers to define precisely the interface between PV Advanced and back office systems.
- Takes advantage of Windows Server built in Radius Server (Network Policy Server)
- Can be deployed on a dedicated server, a virtual Server or if desired through PV Advanced's cloud support.

### Increase Productivity

PV Advanced streamlines, automates, and monitors networks tasks, off loading the day to day tasks allowing network managers to focus on higher level activities such as network expansion

- Instantly deploy devices with configuration templates
- Perform network-wide software updates in a single keystroke
- Pre-schedule or automate day to day maintenance tasks
- Dashboard to monitor real time and historical information
- Build custom reports and set email subscriptions of vital network statistics

### Try for Free

The FREE starter kit is a full-version of PV Advanced software that can manage up to 100 nodes without any restrictions during one month and then switch to 4 nodes without time restriction.

- Completely FREE, No contract, No credit card required.

## Control your Network

- Enable “controller mode” on your devices and they will automatically be discovered, provisioned and firmware upgraded
- Ensure proper RF channel management with Auto Channeling (including Auto Tx Power) and Channel View tool

FEATURES																													
CLIENT SERVER ARCHITECTURE	Server application running within the IT department Web and Java based client for remote access																												
ADMINISTRATION	Customized User Access levels (unique profile per user) Advanced password management Connected user information and operation audit trail Up to 50 concurrent sessions with auto log off																												
DATABASE MANAGEMENT	Backup, Restore, Compaction, Device Suppression																												
REDUNDANCY	Active and Standby server with shared floating IP address Database mirroring between Active and standby server																												
NORTHBOUND INTERFACE	Alarm forwarding group via SNMP v2c/v3 REST API																												
CUSTOM LAYOUT	Adapt PV Advanced display to supervisor needs Managed two customized layout with easy toggle																												
BASIC CONTROLLER	Auto Discovery, Configuration and Firmware Update of devices with controller mode enabled MAC address based device control Collect, store and display clients information RF Channel View																												
ADVANCED CONTROLLER	Access Point RF management: Auto Channeling (including Auto Power), Rogue AP report. Client Management: Load Balancing and Band steering Client Positioning and Tracking																												
TOPOLOGY MANAGEMENT	Tree Architecture with Subnet Group organization Automatic device association (Tsunami MP SU to BSU or Tsunami QB EPA to EPB) Device Context Menu and Label selection																												
NETWORK MAPS	Static maps based on imported drawing (area view, building plan ..) Dynamic Maps directly retrieved from Open Street Map (requires Internet connection) Dynamic Map functionality supports device placement at configured GPS Co-ordinates Use color coded icons to display devices and links over the map																												
CONFIGURATION	Direct Access to managed device WEB GUI Devices profile management to propagate one device configuration to many																												
RADIUS AUTHENTICATION	Simplified Tsunami 820/8200/10100 Radius Authentication settings																												
SCHEDULED TASK	Periodic device configuration and logs backup Multiple device license management Multiple device, SNMP object ID setting, Firmware upgrade or Automatic Reboot																												
FAULT MANAGEMENT	Color coded Event and alarms display with acknowledgment Event selection in predefined list with severity selection Comprehensive Alarms threshold creation with multiple triggering criteria Visual, Audible and email alerts																												
NETWORK TROUBLESHOOTING	ICMP ping, Trace route and SNMP ping, even for non managed devices Radio Link Test to measure performance and optimize RF configuration																												
DASHBOARD	View Current and History Chart Print, Save or Export to Excel file																												
SNMP VERSIONS	SNMPv1, SNMPv2 and SNMPv3																												
OPERATING SYSTEMS	Server: Windows 2003 / Windows 2008 / Windows 2012 Client: Windows (Other Operating Systems are not compatible)																												
SUPPORTED PRODUCTS	<table border="1"> <thead> <tr> <th>Management</th> <th>Basic Controller</th> <th>Advanced Controller</th> </tr> </thead> <tbody> <tr> <td>Tsunami® MP/QB 820/822/825/826/835 Tsunami® MP/QB 8100/8160/8200 Tsunami® MP/QB/XP 10100 Tsunami® GX 800/810 Tsunami® GX 824 ORINOCO® AP 800/8000/8100 ORINOCO® AP 9100/AP-9100R/QB-9100 Tsunami® and ORINOCO® legacy products</td> <td>Tsunami® MP/QB 820/822/825/826/835 Tsunami® MP/QB 8200 Tsunami® MP/QB/XP 10100 ORINOCO® AP 9100/AP-9100R/QB-9100</td> <td>ORINOCO® AP 9100/AP-9100R</td> </tr> </tbody> </table>	Management	Basic Controller	Advanced Controller	Tsunami® MP/QB 820/822/825/826/835 Tsunami® MP/QB 8100/8160/8200 Tsunami® MP/QB/XP 10100 Tsunami® GX 800/810 Tsunami® GX 824 ORINOCO® AP 800/8000/8100 ORINOCO® AP 9100/AP-9100R/QB-9100 Tsunami® and ORINOCO® legacy products	Tsunami® MP/QB 820/822/825/826/835 Tsunami® MP/QB 8200 Tsunami® MP/QB/XP 10100 ORINOCO® AP 9100/AP-9100R/QB-9100	ORINOCO® AP 9100/AP-9100R																						
	Management	Basic Controller	Advanced Controller																										
Tsunami® MP/QB 820/822/825/826/835 Tsunami® MP/QB 8100/8160/8200 Tsunami® MP/QB/XP 10100 Tsunami® GX 800/810 Tsunami® GX 824 ORINOCO® AP 800/8000/8100 ORINOCO® AP 9100/AP-9100R/QB-9100 Tsunami® and ORINOCO® legacy products	Tsunami® MP/QB 820/822/825/826/835 Tsunami® MP/QB 8200 Tsunami® MP/QB/XP 10100 ORINOCO® AP 9100/AP-9100R/QB-9100	ORINOCO® AP 9100/AP-9100R																											
MINIMUM SYSTEM REQUIREMENTS	<table border="1"> <thead> <tr> <th>Network Elements</th> <th>CPU</th> <th>Memory</th> <th>Disk</th> </tr> </thead> <tbody> <tr> <td>&lt;500</td> <td>Intel® Xeon® E3-1240 v5</td> <td>4 to 8 GB</td> <td>500 single partition</td> </tr> <tr> <td>&lt;1,000</td> <td>Intel® Xeon® E3-1280 v5</td> <td>8 GB</td> <td>1,000 GB single partition</td> </tr> <tr> <td>&lt;2,500</td> <td>Intel® Xeon® E5-2660 v4</td> <td>16 GB</td> <td>1,500 GB single partition</td> </tr> <tr> <td>&lt;5,000</td> <td>Intel® Xeon® E5-2680 v4 or E5-2690 v4</td> <td>16 GB</td> <td>2,000 GB single partition</td> </tr> <tr> <td>&lt;7,500</td> <td>Intel® Xeon® E7-8860 v3 or E7-8880 v3</td> <td>16 to 32 GB</td> <td>3,000 GB single partition</td> </tr> <tr> <td>&lt;10,000</td> <td>Intel® Xeon® E7-8880 v3 or E7-8890 v3</td> <td>32 GB</td> <td>4,000 GB single partition</td> </tr> </tbody> </table>	Network Elements	CPU	Memory	Disk	<500	Intel® Xeon® E3-1240 v5	4 to 8 GB	500 single partition	<1,000	Intel® Xeon® E3-1280 v5	8 GB	1,000 GB single partition	<2,500	Intel® Xeon® E5-2660 v4	16 GB	1,500 GB single partition	<5,000	Intel® Xeon® E5-2680 v4 or E5-2690 v4	16 GB	2,000 GB single partition	<7,500	Intel® Xeon® E7-8860 v3 or E7-8880 v3	16 to 32 GB	3,000 GB single partition	<10,000	Intel® Xeon® E7-8880 v3 or E7-8890 v3	32 GB	4,000 GB single partition
Network Elements	CPU	Memory	Disk																										
<500	Intel® Xeon® E3-1240 v5	4 to 8 GB	500 single partition																										
<1,000	Intel® Xeon® E3-1280 v5	8 GB	1,000 GB single partition																										
<2,500	Intel® Xeon® E5-2660 v4	16 GB	1,500 GB single partition																										
<5,000	Intel® Xeon® E5-2680 v4 or E5-2690 v4	16 GB	2,000 GB single partition																										
<7,500	Intel® Xeon® E7-8860 v3 or E7-8880 v3	16 to 32 GB	3,000 GB single partition																										
<10,000	Intel® Xeon® E7-8880 v3 or E7-8890 v3	32 GB	4,000 GB single partition																										

License

ProximVision® Advanced can be downloaded from the Proxim Wireless website and can be quickly and easily installed. ProximVision® Advanced is available for trial as a full feature software package and can be used to control, manage and monitor one hundred nodes for one month. At the end of the month PV A reverts to a free four node version, indefinitely, but is not eligible for regular technical support. If you are satisfied with ProximVision® Advanced and wish to manage a larger network and leverage our technical support services please contact your Proxim Wireless sales representative, use the built-in license upgrade functionality within ProximVision® Advanced or send a request through the Proxim Wireless corporate website to purchase a license <http://www.proxim.com/about-us/contact-us>

For detailed technical specifications, please go to [www.proxim.com/products/network-controller](http://www.proxim.com/products/network-controller)