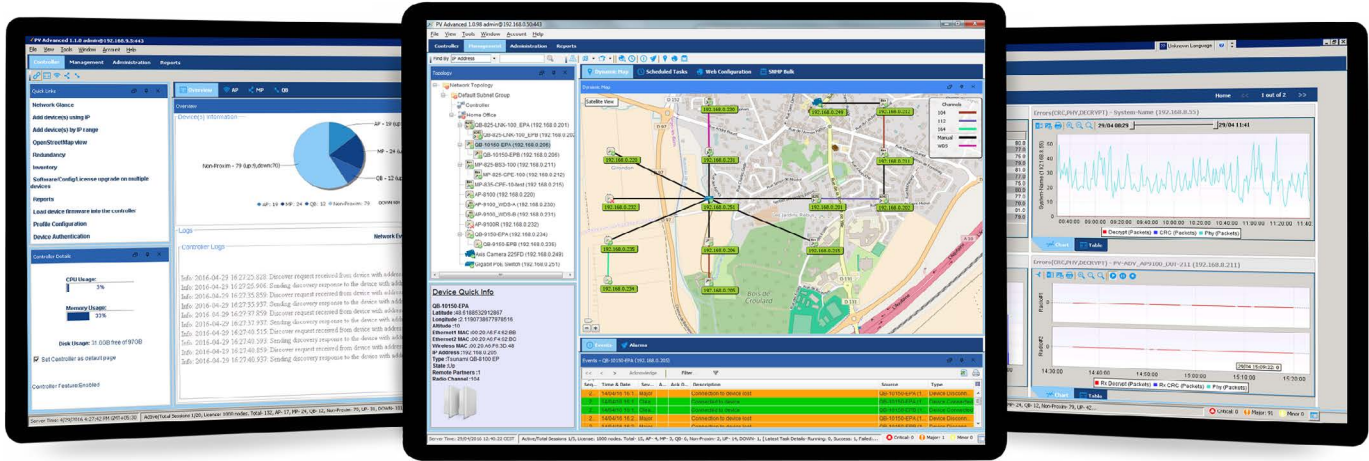


# ProximVision® Advanced

## Advanced Cloud Enabled Carrier Management System + WLAN Controller



### Control, Provision and Manage

Comprised of a wide variety of powerful tools, ProximVision® Advanced unifies management of the entire Proxim infrastructure. From monitoring network performance to remote device configuration and management. All the tools needed for effective network management.

### CLOUD ENABLED

ProximVision® Advanced is ideally suited to operate in the cloud on AWS. This has the advantage of providing a high availability, while also reducing operational cost.

### Be the first to know

Identify faults and troubleshoot remotely

- Set push-notifications on events that require immediate notification
- Quickly identify and isolate faults via the alert filtering tool
- Add threshold alarms with advanced threshold crossing rules
- Access and manage your network from any location via web based access

### Increase Productivity

ProximVision® Advanced streamlines, automates, and monitors networks tasks, off loading the day to day tasks allowing network managers to focus on higher level activities such as network expansion.

- Instantly deploy devices with configuration templates
- Perform network-wide software updates in a single keystroke
- Pre-schedule or automate day to day maintenance tasks
- Build custom reports and set email subscriptions of vital network statistics

### Try for Free

ProximVision® Advanced starter kit will support 100 nodes during the first month and then switch to 4 nodes without time restriction.

### About Proxim Wireless

Proxim Wireless is a pioneer and global leader in advanced Wi-Fi, point to point, and point to multipoint outdoor wireless systems that deliver high performance and high availability communications.

With over 30 years of wireless experience, Proxim is recognized for its unparalleled reliability, superior performance and drive for innovation.

FEATURES																													
CLIENT SERVER ARCHITECTURE	Server application running within the IT department Web and Java based client for remote access																												
ADMINISTRATION	Customized User Access levels (unique profile per user) Advanced password management Connected user information and operation audit trail Up to 50 concurrent sessions with auto log off																												
DATABASE MANAGEMENT	Backup, Restore, Compaction, Device Suppression																												
REDUNDANCY	Active and Standby server with shared floating IP address Database mirroring between Active and standby server																												
NORTHBOUND INTERFACE	Alarm forwarding group via SNMP v2c/v3 REST API																												
CUSTOM LAYOUT	Adapt PV Advanced display to supervisor needs Managed two customized layout with easy toggle																												
BASIC CONTROLLER	Auto Discovery, Configuration and Firmware Update of devices with controller mode enabled MAC address based device control with IP address assignment Collect, store and display clients information RF Channel View																												
ADVANCED CONTROLLER	Access Point RF management: Auto Channeling (including Auto Power), Rogue AP report. Network Statistics (top/bottom 10 APs for various criteria) Client Management: Load Balancing and Band steering Client Positioning and Tracking																												
TOPOLOGY MANAGEMENT	Tree Architecture with Subnet Group organization Automatic device association (Tsunami MP SU to BSU or Tsunami QB EPA to EPB) Device Context Menu and Label selection																												
NETWORK MAPS	Static maps based on imported drawing (area view, building plan ...) Dynamic Maps directly retrieved from Open Street Map (requires Internet connection) Dynamic Map functionality supports device placement at configured GPS Co-ordinates Use color coded icons to display devices and links over the map																												
CONFIGURATION	Direct Access to managed device WEB GUI Devices profile management to propagate one device configuration to many																												
RADIUS AUTHENTICATION	Simplified Tsunami 820/8200/10100 Radius Authentication settings																												
SCHEDULED TASK	Scheduled performance email reports Periodic device configuration and logs backup Multiple device license management Multiple device, SNMP object ID setting, Firmware upgrade or Automatic Reboot																												
FAULT MANAGEMENT	Color coded Event and alarms display with acknowledgment Event selection in predefined list with severity selection Comprehensive Alarms threshold creation with multiple triggering criteria Visual, Audible and email alerts																												
NETWORK TROUBLESHOOTING	ICMP ping, Trace route and SNMP ping, even for non managed devices Radio Link Test to measure performance and optimize RF configuration																												
DASHBOARD	View Current and History Chart Print, Save or Export to Excel file																												
SNMP VERSIONS	SNMPv1, SNMPv2 and SNMPv3																												
OPERATING SYSTEMS	Server: Windows 2008 (and R2) / Windows 2012 (and R2) / Windows 2016 Client: Windows (Other Operating Systems are not compatible)																												
SUPPORTED PRODUCTS	<table border="1"> <thead> <tr> <th>Management</th> <th>Basic Controller</th> <th>Advanced Controller</th> </tr> </thead> <tbody> <tr> <td>Tsunami® MP/QB 820/822/825/826/835 Tsunami® MP/QB 8100/8160/8200/8260 Tsunami® MP/QB/XP 10100/10200 Tsunami® GX 800/810 Tsunami® GX 824 ORINOCO® AP 800/8000/8100 ORINOCO® AP 9100/AP-9100R/QE-9100 Tsunami® and ORINOCO® legacy products</td> <td>Tsunami® MP/QB 820/822/825/826/835 Tsunami® MP/QB 8200 Tsunami® MP/QB/XP 10100/10200 ORINOCO® AP 9100/AP-9100R/QB-9100</td> <td>ORINOCO® AP 9100/AP-9100R</td> </tr> </tbody> </table>	Management	Basic Controller	Advanced Controller	Tsunami® MP/QB 820/822/825/826/835 Tsunami® MP/QB 8100/8160/8200/8260 Tsunami® MP/QB/XP 10100/10200 Tsunami® GX 800/810 Tsunami® GX 824 ORINOCO® AP 800/8000/8100 ORINOCO® AP 9100/AP-9100R/QE-9100 Tsunami® and ORINOCO® legacy products	Tsunami® MP/QB 820/822/825/826/835 Tsunami® MP/QB 8200 Tsunami® MP/QB/XP 10100/10200 ORINOCO® AP 9100/AP-9100R/QB-9100	ORINOCO® AP 9100/AP-9100R																						
	Management	Basic Controller	Advanced Controller																										
Tsunami® MP/QB 820/822/825/826/835 Tsunami® MP/QB 8100/8160/8200/8260 Tsunami® MP/QB/XP 10100/10200 Tsunami® GX 800/810 Tsunami® GX 824 ORINOCO® AP 800/8000/8100 ORINOCO® AP 9100/AP-9100R/QE-9100 Tsunami® and ORINOCO® legacy products	Tsunami® MP/QB 820/822/825/826/835 Tsunami® MP/QB 8200 Tsunami® MP/QB/XP 10100/10200 ORINOCO® AP 9100/AP-9100R/QB-9100	ORINOCO® AP 9100/AP-9100R																											
MINIMUM SYSTEM REQUIREMENTS	<table border="1"> <thead> <tr> <th>Network Elements</th> <th>CPU</th> <th>Memory</th> <th>Disk</th> </tr> </thead> <tbody> <tr> <td>&lt;500</td> <td>Intel® Xeon® E3-1240 v5</td> <td>4 to 8 GB</td> <td>500 single partition</td> </tr> <tr> <td>&lt;1,000</td> <td>Intel® Xeon® E3-1280 v5</td> <td>8 GB</td> <td>1,000 GB single partition</td> </tr> <tr> <td>&lt;2,500</td> <td>Intel® Xeon® E5-2660 v4</td> <td>16 GB</td> <td>1,500 GB single partition</td> </tr> <tr> <td>&lt;5,000</td> <td>Intel® Xeon® E5-2680 v4 or E5-2690 v4</td> <td>16 GB</td> <td>2,000 GB single partition</td> </tr> <tr> <td>&lt;7,500</td> <td>Intel® Xeon® E7-8860 v3 or E7-8880 v3</td> <td>16 to 32 GB</td> <td>3,000 GB single partition</td> </tr> <tr> <td>&lt;10,000</td> <td>Intel® Xeon® E7-8880 v3 or E7-8890 v3</td> <td>32 GB</td> <td>4,000 GB single partition</td> </tr> </tbody> </table>	Network Elements	CPU	Memory	Disk	<500	Intel® Xeon® E3-1240 v5	4 to 8 GB	500 single partition	<1,000	Intel® Xeon® E3-1280 v5	8 GB	1,000 GB single partition	<2,500	Intel® Xeon® E5-2660 v4	16 GB	1,500 GB single partition	<5,000	Intel® Xeon® E5-2680 v4 or E5-2690 v4	16 GB	2,000 GB single partition	<7,500	Intel® Xeon® E7-8860 v3 or E7-8880 v3	16 to 32 GB	3,000 GB single partition	<10,000	Intel® Xeon® E7-8880 v3 or E7-8890 v3	32 GB	4,000 GB single partition
	Network Elements	CPU	Memory	Disk																									
	<500	Intel® Xeon® E3-1240 v5	4 to 8 GB	500 single partition																									
	<1,000	Intel® Xeon® E3-1280 v5	8 GB	1,000 GB single partition																									
	<2,500	Intel® Xeon® E5-2660 v4	16 GB	1,500 GB single partition																									
	<5,000	Intel® Xeon® E5-2680 v4 or E5-2690 v4	16 GB	2,000 GB single partition																									
<7,500	Intel® Xeon® E7-8860 v3 or E7-8880 v3	16 to 32 GB	3,000 GB single partition																										
<10,000	Intel® Xeon® E7-8880 v3 or E7-8890 v3	32 GB	4,000 GB single partition																										

License

ProximVision® Advanced can be downloaded from the Proxim Wireless website and can be quickly and easily installed. ProximVision® Advanced is available for trial as a full feature software package and can be used to control, manage and monitor one hundred nodes for one month. At the end of the month PV A reverts to a free four node version, indefinitely, but is not eligible for regular technical support. If you are satisfied with ProximVision® Advanced and wish to manage a larger network and leverage our technical support services please contact your Proxim Wireless sales representative, use the built-in license upgrade functionality within ProximVision® Advanced or send a request through the Proxim Wireless corporate website to purchase a license <http://www.proxim.com/about-us/contact-us>

For detailed technical specifications, please go to [www.proxim.com/products/network-controller](http://www.proxim.com/products/network-controller)