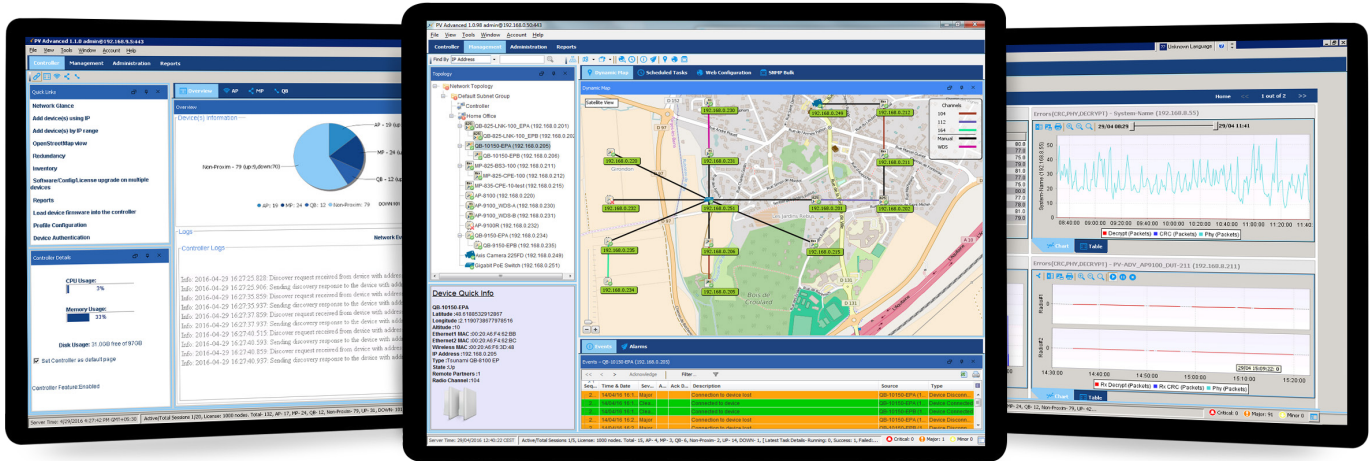


ProximVision® Advanced

Control your Wireless Network through the Cloud



ProximVision® Advanced merges a Cloud Based Carrier Management System and WLAN Controller features into a single cutting-edge software platform

ProximVision® Advanced takes the next step in network management and control providing seamless command over very large Heterogeneous Network (Het Net) deployments. This groundbreaking solution provides detailed fault reporting, configuration, administration, and provisioning support for all Proxim radio products including WiFi access points, backhaul links, and point to multipoint solutions.

With a suite of powerful tools, PV Advanced unifies management of the entire Proxim infrastructure, with just a few clicks. From monitoring network performance to automatic remote device configuration and management PV Advanced simplifies network deployment and provides total control

Designed to Support Very Large Heterogeneous Networks

- Controls up to 10 000 devices via 50 concurrent network admin sessions
- Fully supports Proxim ORINOCO® and Tsunami® product lines, while providing basic information for SNMP ready 3rd party elements (such as Router, Switches or video cameras...)
- Removes the management system as a single point of failure by supporting redundant servers and databases.
- Includes a North Bound Interface based on Restful API allowing customers to define precisely the interface between PV Advanced and back office systems.
- Takes advantage of Windows Server built in Radius Server (Network Policy Server)
- Can be deployed on a dedicated server, a virtual Server or if desired through PV Advanced's cloud support.

Control your Network

- Enable "controller mode" on your devices and they will automatically be discovered, provisioned and firmware upgraded
- Ensure proper RF channel management with Auto Channeling (including Auto Tx Power) and Channel View tool

- Enable Load Balancing and Band steering for better AP efficiency
- Review Client device information over the last 30 days, position it on the map and track it on the move

Be the First to Know

Identify faults and troubleshoot remotely

- Visualize network status on the static or dynamic maps
- Set advanced threshold rules alarms and push-notifications on events that require immediate notification
- Quickly identify and isolate faults via the Alert filtering tool
- Access and manage your network from any location via Web based access

Increase Productivity

PV Advanced streamlines, automates, and monitors networks tasks, off loading the day to day tasks allowing network managers to focus on higher level activities such as network expansion

- Instantly deploy devices with configuration templates
- Perform network-wide software updates in a single keystroke
- Pre-schedule or automate day to day maintenance tasks
- Dashboard to monitor real time and historical information
- Build custom reports and set email subscriptions of vital network statistics

Try for Free

The FREE starter kit is a full-version of PV Advanced software that can manage up to 100 nodes without any restrictions during one month and then switch to 4 nodes without time restriction.

- Completely FREE, No contract, No credit card required.

| FEATURES | | | | | | | | | | | | | | | | | | | | | | | | | | | | | |
|---|--|---------------------------|---------------------------|---------------------|---|---|---------------------------|-----------|----------------------|--------|-------------------------|------|---------------------------|--------|-------------------------|-------|---------------------------|--------|---------------------------------------|-------|---------------------------|--------|---------------------------------------|-------------|---------------------------|---------|---------------------------------------|-------|---------------------------|
| CLIENT SERVER ARCHITECTURE | Server application running within the IT department Web and Java based client for remote access | | | | | | | | | | | | | | | | | | | | | | | | | | | | |
| ADMINISTRATION | Customized User Access levels (unique profile per user) Advanced password management Connected user information and operation audit trail Up to 50 concurrent sessions with auto log off | | | | | | | | | | | | | | | | | | | | | | | | | | | | |
| DATABASE MANAGEMENT | Backup, Restore, Compaction, Device Suppression | | | | | | | | | | | | | | | | | | | | | | | | | | | | |
| REDUNDANCY | Active and Standby server with shared floating IP address Database mirroring between Active and standby server | | | | | | | | | | | | | | | | | | | | | | | | | | | | |
| NORTHBOUND INTERFACE | Alarm forwarding group via SNMP v2c/v3 REST API | | | | | | | | | | | | | | | | | | | | | | | | | | | | |
| CUSTOM LAYOUT | Adapt PV Advanced display to supervisor needs Managed two customized layout with easy toggle | | | | | | | | | | | | | | | | | | | | | | | | | | | | |
| BASIC CONTROLLER | Auto Discovery, Configuration and Firmware Update of devices with controller mode enabled MAC address based device control Collect, store and display clients information RF Channel View | | | | | | | | | | | | | | | | | | | | | | | | | | | | |
| ADVANCED CONTROLLER | Access Point RF management: Auto Channeling (including Auto Power), Rogue AP report. Client Management: Load Balancing and Band steering Client Positioning and Tracking | | | | | | | | | | | | | | | | | | | | | | | | | | | | |
| TOPOLOGY MANAGEMENT | Tree Architecture with Subnet Group organization Automatic device association (Tsunami MP SU to BSU or Tsunami QB EPA to EPB) Device Context Menu and Label selection | | | | | | | | | | | | | | | | | | | | | | | | | | | | |
| NETWORK MAPS | Static maps based on imported drawing (area view, building plan ...) Dynamic Maps directly retrieved from Open Street Map (requires Internet connection) Dynamic Map functionality supports device placement at configured GPS Co-ordinates Use color coded icons to display devices and links over the map | | | | | | | | | | | | | | | | | | | | | | | | | | | | |
| CONFIGURATION | Direct Access to managed device WEB GUI Devices profile management to propagate one device configuration to many | | | | | | | | | | | | | | | | | | | | | | | | | | | | |
| RADIUS AUTHENTICATION | Simplified Tsunami 820/8200/10100 Radius Authentication settings | | | | | | | | | | | | | | | | | | | | | | | | | | | | |
| SCHEDULED TASK | Periodic device configuration and logs backup Multiple device license management Multiple device, SNMP object ID setting, Firmware upgrade or Automatic Reboot | | | | | | | | | | | | | | | | | | | | | | | | | | | | |
| FAULT MANAGEMENT | Color coded Event and alarms display with acknowledgment Event selection in predefined list with severity selection Comprehensive Alarms threshold creation with multiple triggering criteria Visual, Audible and email alerts | | | | | | | | | | | | | | | | | | | | | | | | | | | | |
| NETWORK TROUBLESHOOTING | ICMP ping, Trace route and SNMP ping, even for non managed devices Radio Link Test to measure performance and optimize RF configuration | | | | | | | | | | | | | | | | | | | | | | | | | | | | |
| DASHBOARD | View Current and History Chart Print, Save or Export to Excel file | | | | | | | | | | | | | | | | | | | | | | | | | | | | |
| SNMP VERSIONS | SNMPv1, SNMPv2 and SNMPv3 | | | | | | | | | | | | | | | | | | | | | | | | | | | | |
| OPERATING SYSTEMS | Server: Windows 2003 / Windows 2008 / Windows 2012 Client: Windows (Other Operating Systems are not compatible) | | | | | | | | | | | | | | | | | | | | | | | | | | | | |
| SUPPORTED PRODUCTS | <table border="1"> <thead> <tr> <th>Management</th> <th>Basic Controller</th> <th>Advanced Controller</th> </tr> </thead> <tbody> <tr> <td>Tsunami® MP/QB 820/822/825/826/835 Tsunami® MP/QB 8100/8160/8200 Tsunami® MP/QB/XP 10100 Tsunami® GX 800/810 Tsunami® GX 824 ORINOCO® AP 800/8000/8100 ORINOCO® AP 9100/AP-9100R/QB-9100 Tsunami® and ORINOCO® legacy products</td> <td>Tsunami® MP/QB 820/822/825/826/835 Tsunami® MP/QB 8200 Tsunami® MP/QB/XP 10100 ORINOCO® AP 9100/AP-9100R/QB-9100</td> <td>ORINOCO® AP 9100/AP-9100R</td> </tr> </tbody> </table> | Management | Basic Controller | Advanced Controller | Tsunami® MP/QB 820/822/825/826/835 Tsunami® MP/QB 8100/8160/8200 Tsunami® MP/QB/XP 10100 Tsunami® GX 800/810 Tsunami® GX 824 ORINOCO® AP 800/8000/8100 ORINOCO® AP 9100/AP-9100R/QB-9100 Tsunami® and ORINOCO® legacy products | Tsunami® MP/QB 820/822/825/826/835 Tsunami® MP/QB 8200 Tsunami® MP/QB/XP 10100 ORINOCO® AP 9100/AP-9100R/QB-9100 | ORINOCO® AP 9100/AP-9100R | | | | | | | | | | | | | | | | | | | | | | |
| | Management | Basic Controller | Advanced Controller | | | | | | | | | | | | | | | | | | | | | | | | | | |
| Tsunami® MP/QB 820/822/825/826/835 Tsunami® MP/QB 8100/8160/8200 Tsunami® MP/QB/XP 10100 Tsunami® GX 800/810 Tsunami® GX 824 ORINOCO® AP 800/8000/8100 ORINOCO® AP 9100/AP-9100R/QB-9100 Tsunami® and ORINOCO® legacy products | Tsunami® MP/QB 820/822/825/826/835 Tsunami® MP/QB 8200 Tsunami® MP/QB/XP 10100 ORINOCO® AP 9100/AP-9100R/QB-9100 | ORINOCO® AP 9100/AP-9100R | | | | | | | | | | | | | | | | | | | | | | | | | | | |
| MINIMUM SYSTEM REQUIREMENTS | <table border="1"> <thead> <tr> <th>Network Elements</th> <th>CPU</th> <th>Memory</th> <th>Disk</th> </tr> </thead> <tbody> <tr> <td><500</td> <td>Intel® Xeon® E3-1240 v5</td> <td>4 to 8 GB</td> <td>500 single partition</td> </tr> <tr> <td><1,000</td> <td>Intel® Xeon® E3-1280 v5</td> <td>8 GB</td> <td>1,000 GB single partition</td> </tr> <tr> <td><2,500</td> <td>Intel® Xeon® E5-2660 v4</td> <td>16 GB</td> <td>1,500 GB single partition</td> </tr> <tr> <td><5,000</td> <td>Intel® Xeon® E5-2680 v4 or E5-2690 v4</td> <td>16 GB</td> <td>2,000 GB single partition</td> </tr> <tr> <td><7,500</td> <td>Intel® Xeon® E7-8860 v3 or E7-8880 v3</td> <td>16 to 32 GB</td> <td>3,000 GB single partition</td> </tr> <tr> <td><10,000</td> <td>Intel® Xeon® E7-8880 v3 or E7-8890 v3</td> <td>32 GB</td> <td>4,000 GB single partition</td> </tr> </tbody> </table> | Network Elements | CPU | Memory | Disk | <500 | Intel® Xeon® E3-1240 v5 | 4 to 8 GB | 500 single partition | <1,000 | Intel® Xeon® E3-1280 v5 | 8 GB | 1,000 GB single partition | <2,500 | Intel® Xeon® E5-2660 v4 | 16 GB | 1,500 GB single partition | <5,000 | Intel® Xeon® E5-2680 v4 or E5-2690 v4 | 16 GB | 2,000 GB single partition | <7,500 | Intel® Xeon® E7-8860 v3 or E7-8880 v3 | 16 to 32 GB | 3,000 GB single partition | <10,000 | Intel® Xeon® E7-8880 v3 or E7-8890 v3 | 32 GB | 4,000 GB single partition |
| Network Elements | CPU | Memory | Disk | | | | | | | | | | | | | | | | | | | | | | | | | | |
| <500 | Intel® Xeon® E3-1240 v5 | 4 to 8 GB | 500 single partition | | | | | | | | | | | | | | | | | | | | | | | | | | |
| <1,000 | Intel® Xeon® E3-1280 v5 | 8 GB | 1,000 GB single partition | | | | | | | | | | | | | | | | | | | | | | | | | | |
| <2,500 | Intel® Xeon® E5-2660 v4 | 16 GB | 1,500 GB single partition | | | | | | | | | | | | | | | | | | | | | | | | | | |
| <5,000 | Intel® Xeon® E5-2680 v4 or E5-2690 v4 | 16 GB | 2,000 GB single partition | | | | | | | | | | | | | | | | | | | | | | | | | | |
| <7,500 | Intel® Xeon® E7-8860 v3 or E7-8880 v3 | 16 to 32 GB | 3,000 GB single partition | | | | | | | | | | | | | | | | | | | | | | | | | | |
| <10,000 | Intel® Xeon® E7-8880 v3 or E7-8890 v3 | 32 GB | 4,000 GB single partition | | | | | | | | | | | | | | | | | | | | | | | | | | |

License

ProximVision® Advanced can be downloaded from the Proxim Wireless website and can be quickly and easily installed. ProximVision® Advanced is available for trial as a full feature software package and can be used to control, manage and monitor one hundred nodes for one month. At the end of the month PV A reverts to a free four node version, indefinitely, but is not eligible for regular technical support. If you are satisfied with ProximVision® Advanced and wish to manage a larger network and leverage our technical support services please contact your Proxim Wireless sales representative, use the built-in license upgrade functionality within ProximVision® Advanced or send a request through the Proxim Wireless corporate website to purchase a license <http://www.proxim.com/about-us/contact-us>

For detailed technical specifications, please go to www.proxim.com/products/network-controller